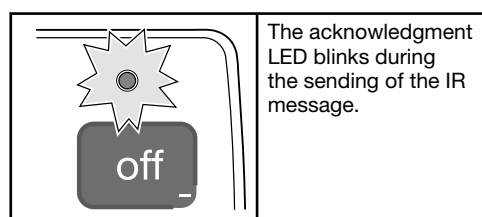


Use

The remote control allows the user to set or modify settings on the presence detectors EEK513W and EEK510B. Each button corresponds to a command.



Technical specification

Power supply: 1x 3V CR2032
Shelf life of battery: 3½ years
Protection index: IP 30

Settings available

Key	Action	Function	Product Type
on +	Short Press (< 5s.)	On	EEK513W / EEK510B
	Long Press (> 5s.)	Dim up	EEK513W / EEK510B
off -	Short Press	Off	EEK513W / EEK510B
	Long Press (> 5s.)	Dim down	EEK513W / EEK510B
1	Short Press	To start scene 1	
	Long Press (> 5s.)	To start scene 1	
2	Short Press	To start scene 2	
	Long Press (> 5s.)	To start scene 2	
3	Short Press	To start scene 3	
	Long Press (> 5s.)	To start scene 3	
4	Short Press	To start scene 4	
	Long Press (> 5s.)	To start scene 4	